

Section A – 2900 M

Preliminary, Intermediate & Intermediate Hybrid only

Start A	CTF 3	CTF 6	Finish A
CTF 1	CTF 4	CTF 7	
CTF 2	K 2	CTF 8	
K 1	CTF 5	K 3	



Section B – 6815 M

Intermediate
Intermediate Hybrid

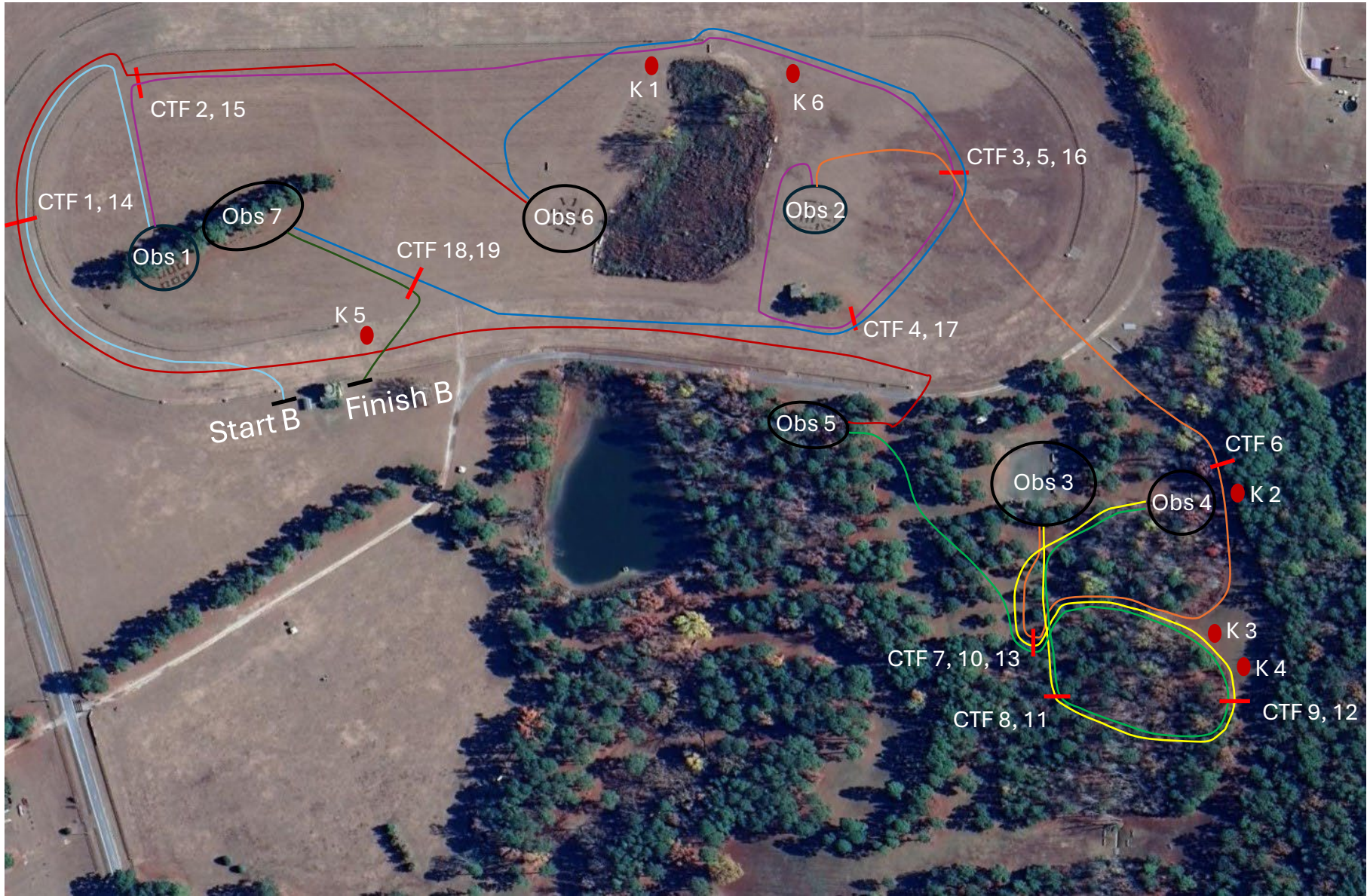
Start A
CTF 1
OBS 1
CTF 2
K 1
CTF 3
CTF 4

OBS 2
CTF 5
CTF 6
2 K
CTF 7
OBS 3
CTF 8

CTF 9
K 3
CTF 10
OBS 4
CTF 11
CTF 12
K 4

CTF 13
OBS 5
K 5
CTF 14
CTF 15
OBS 6
K 6

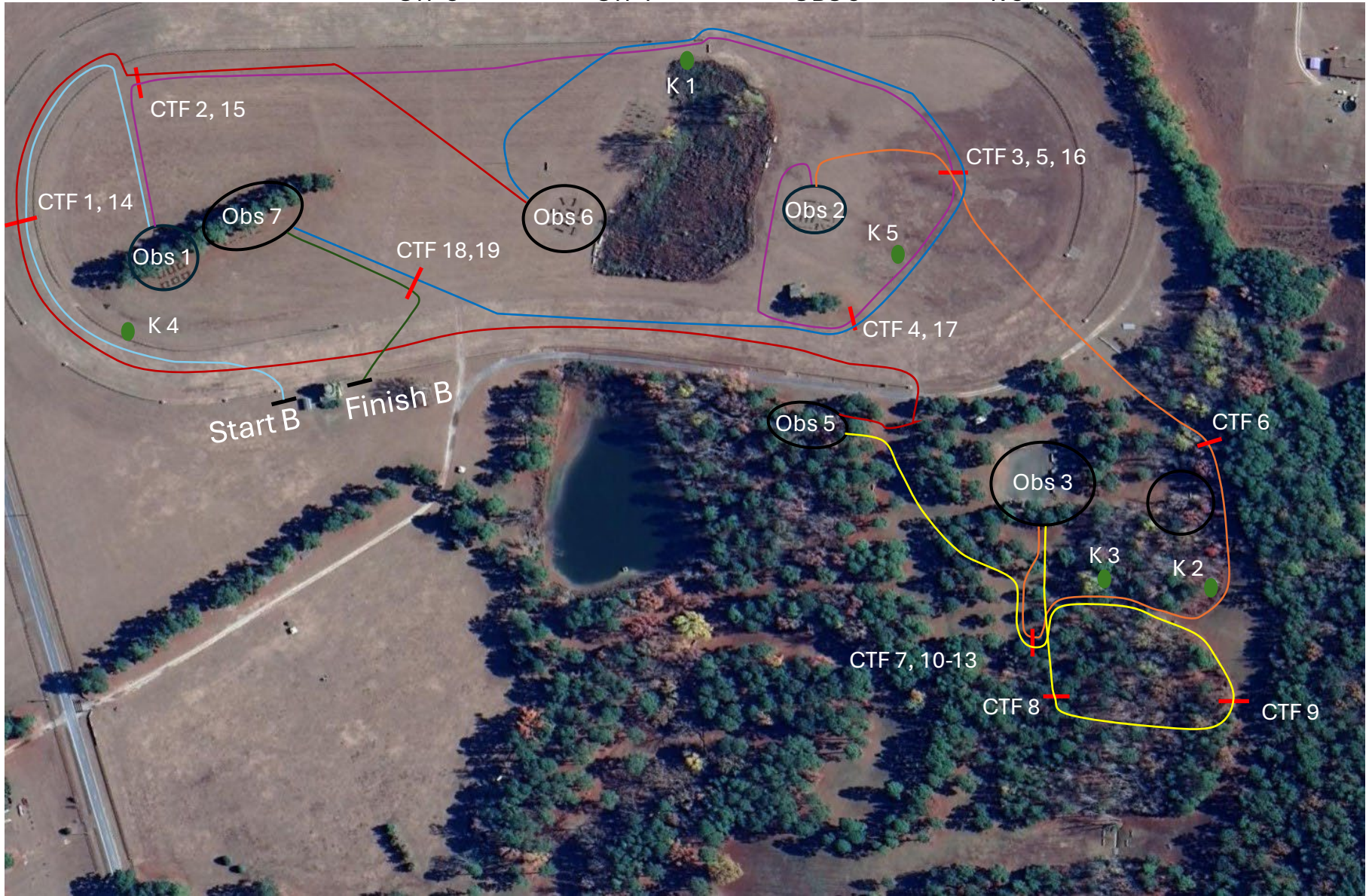
CTF 16
CTF 17
CTF 18
OBS 7
CTF 19
Finish A



Section B – 5660 M

Preliminary

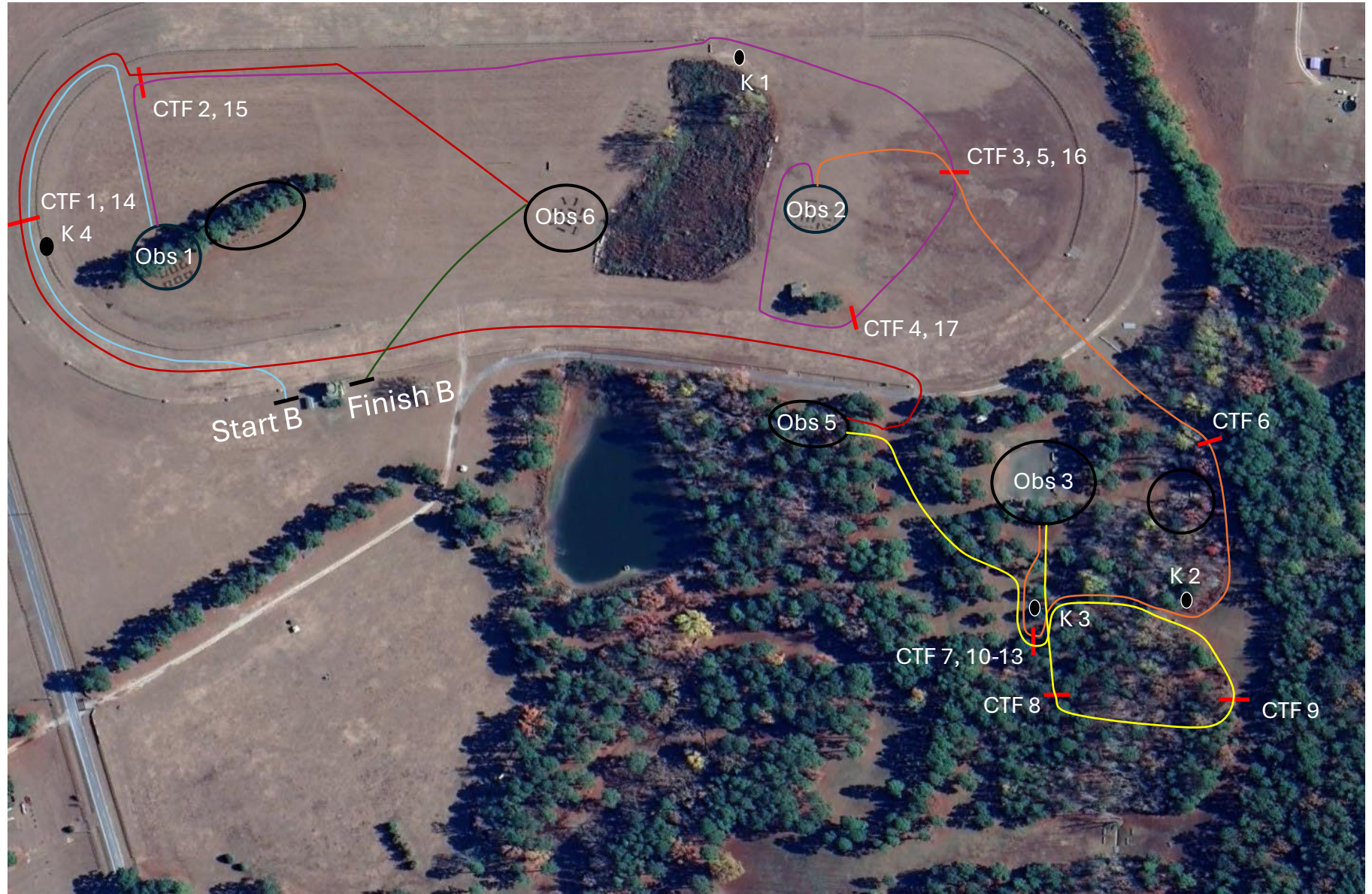
Start A	CTF 4	OBS 3	K 4	CTF 17
CTF 1	OBS 2	CTF 8	CTF 14	CTF 18
OBS 1	CTF 5	CTF 9	CTF 15	OBS 7
CTF 2	CTF 6	K 3	OBS 6	CTF 19
K 1	K 2	CTF 10-13	CTF 16	Finish A
CTF 3	CTF 7	OBS 5	K 5	



Section B – 4660 M

Training

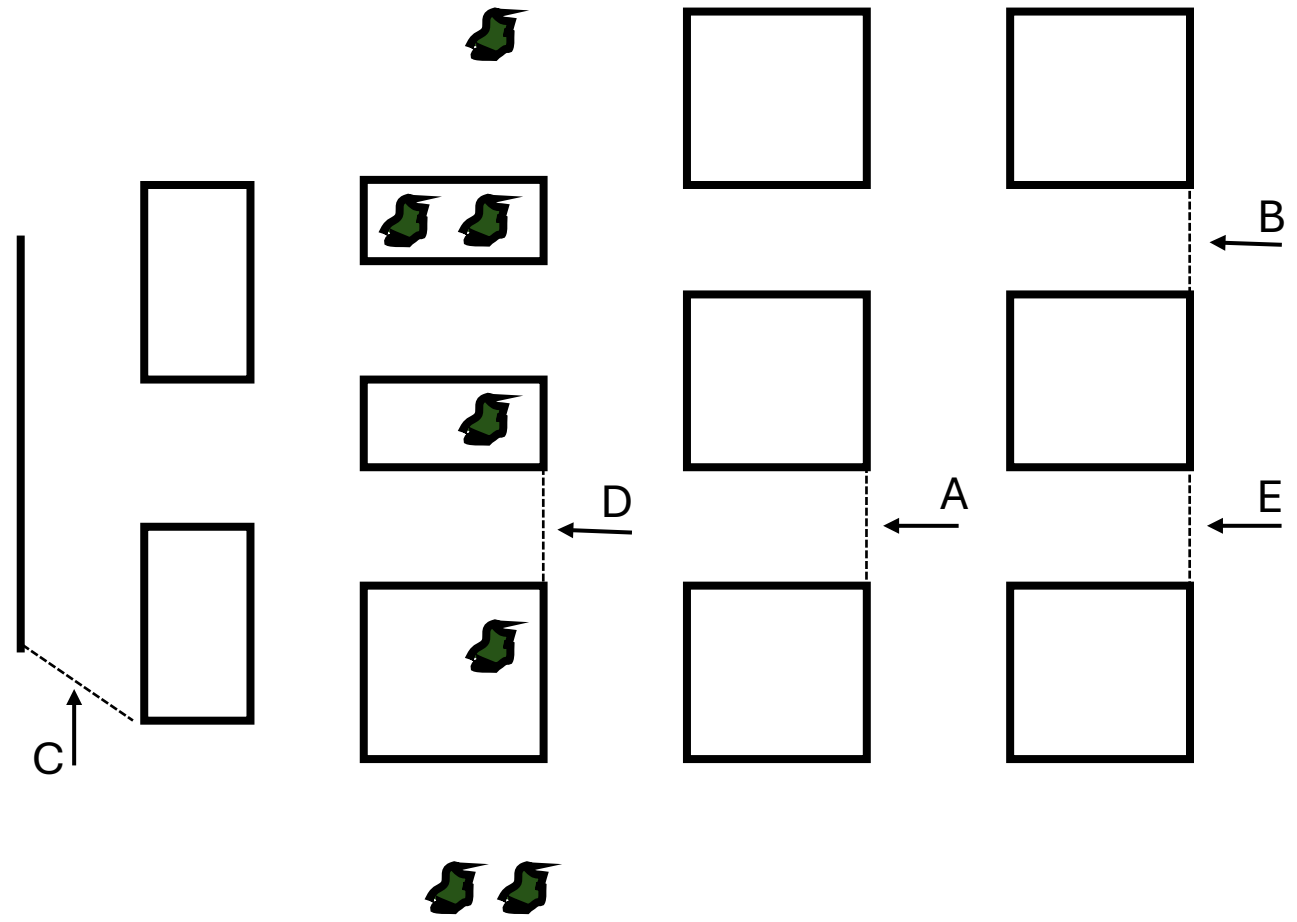
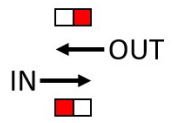
Start A	CTF 3	K 2	K 3	CTF 15
CTF 1	CTF 4	CTF 7	CTF 10-13	OBS 6
OBS 1	OBS 2	OBS 3	OBS 5	Finish A
CTF 2	CTF 5	CTF 8	K 4	
K 1	CTF 6	CTF 9	CTF 14	



Obstacle 1

“First Love”

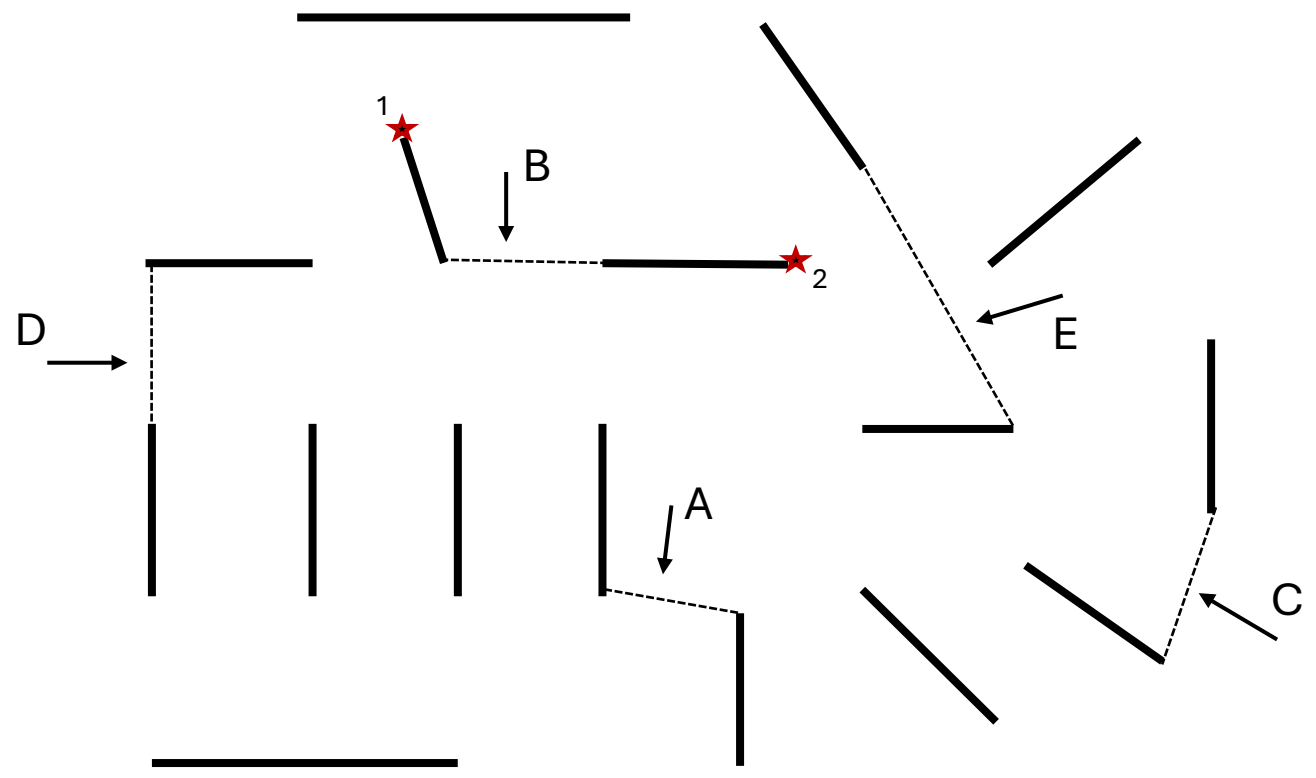
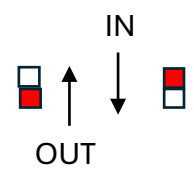
- Training
- Preliminary
- Intermediate
- Intermediate Hybrid



Obstacle 2

“New Heritage Farm Carriages”

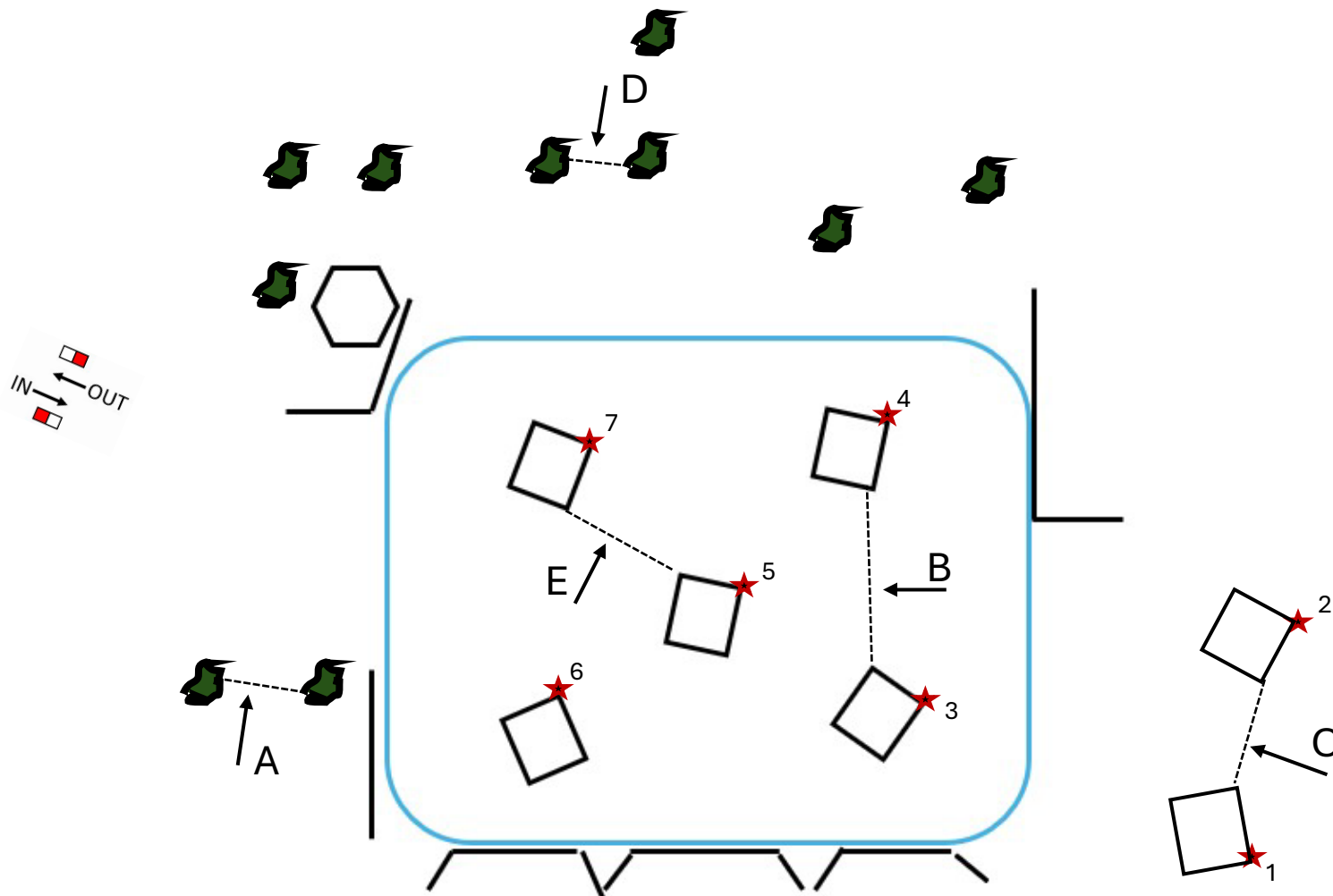
Training
Preliminary
Intermediate
Intermediate Hybrid



Obstacle 3

“Gloria’s Splash”

Training
Preliminary
Intermediate
Intermediate Hybrid



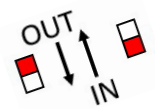
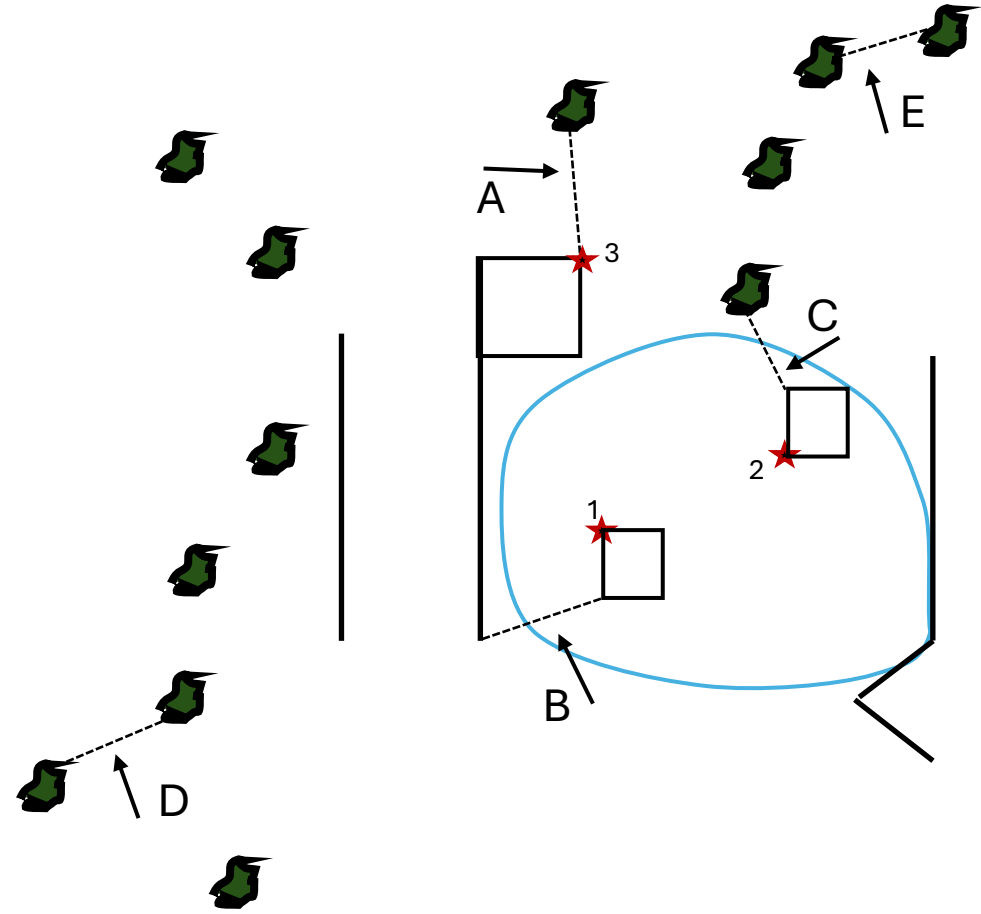
Knockdowns: 7

Course Design: Madeleine Augustsson

Obstacle 4

“Pringles Pond”

Intermediate
Intermediate Hybrid



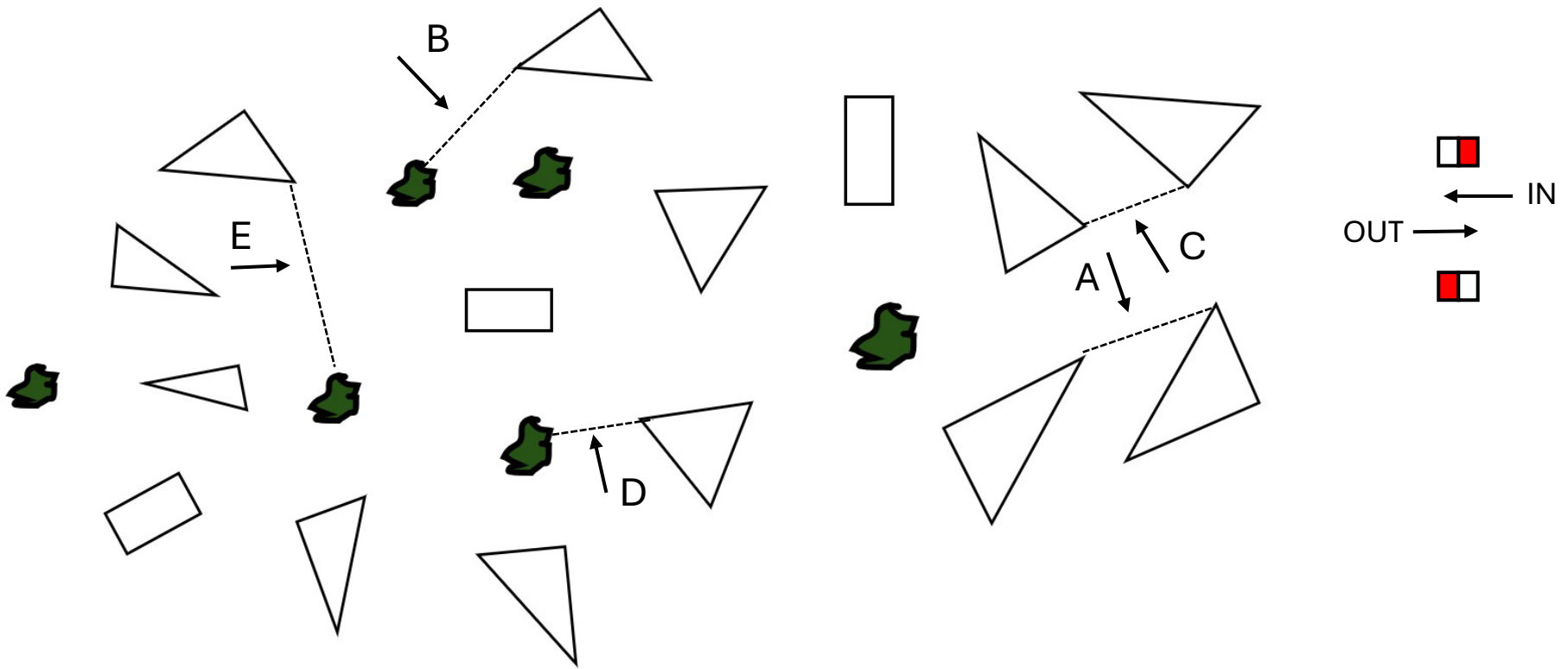
Knockdowns: 3

Course Design: Madeleine Augustsson

Obstacle 5

“Forest Fun”

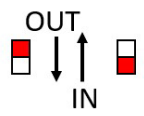
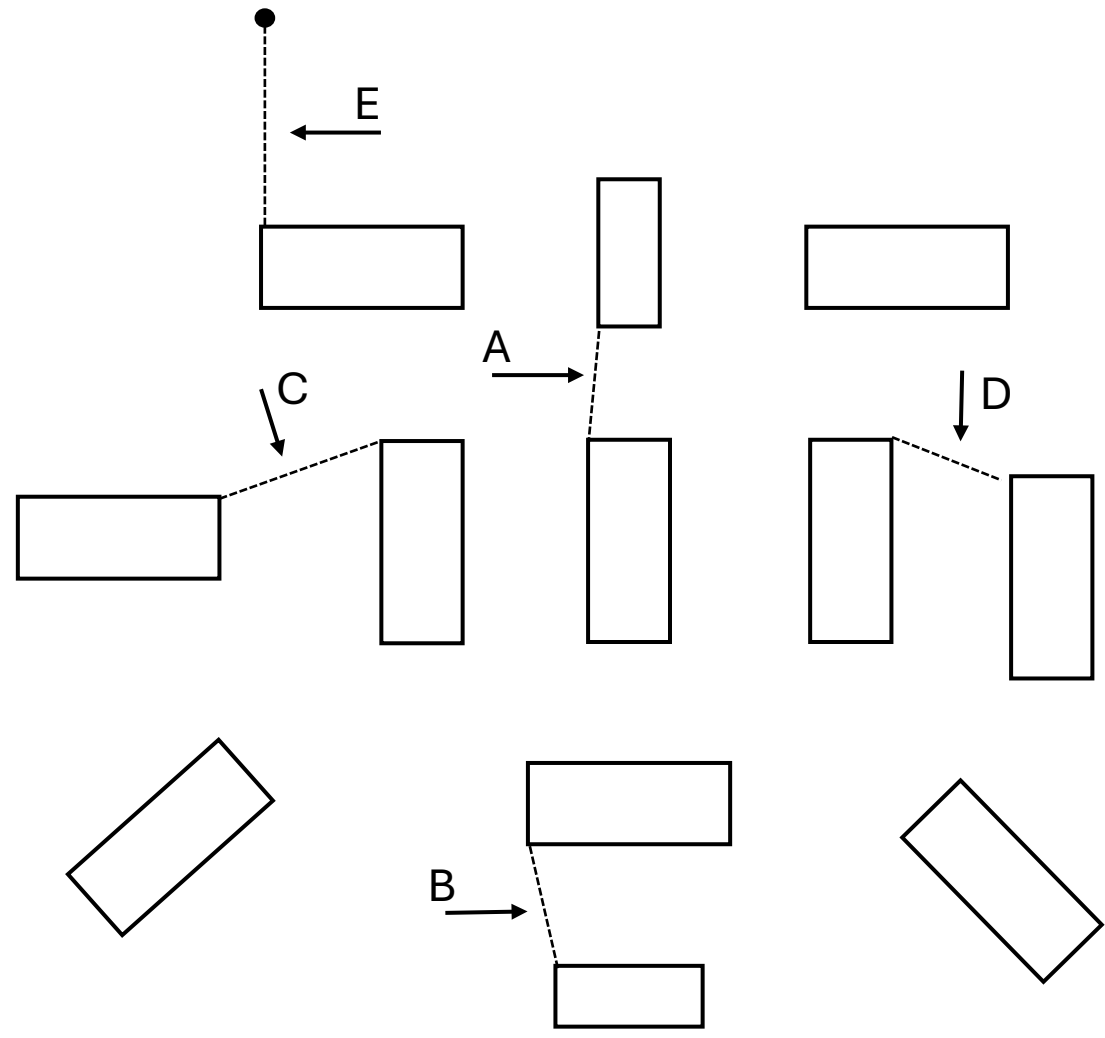
- Training
- Preliminary
- Intermediate
- Intermediate Hybrid



Obstacle 6

“Big Logs”

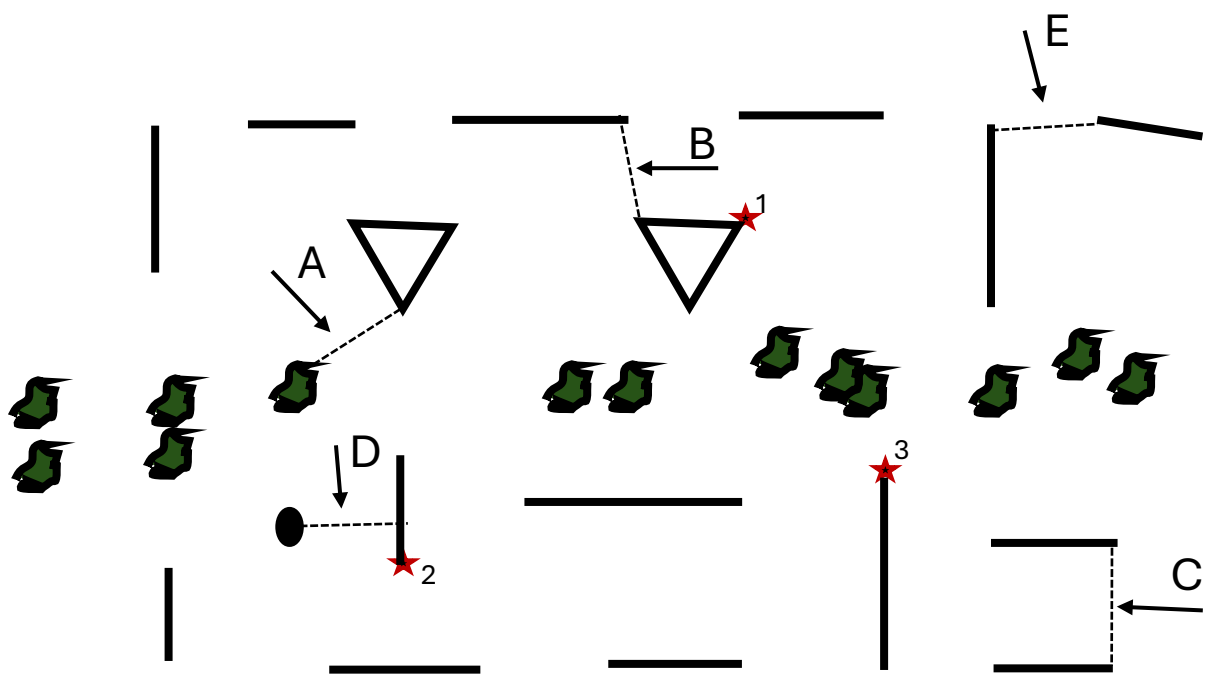
- Training
- Preliminary
- Intermediate
- Intermediate Hybrid



Obstacle 7

“In The Trees”

Preliminary
Intermediate
Intermediate Hybrid



Knockdowns: 3

Course Design: Madeleine Augustsson